

# Educube Modules include:

User Management	School Calendar	Attendance	Curriculum	Admission	Internal Messaging
Notice Board	Time Table	Performance Alumni	Bus Management	Hostel Management	Canteen Management
Fees Management	Performance & e-Report Cards	Shared Documents	Front Office Management	Role Management	Lesson Planning
Feedback Management	Payroll Management	Reporting			
Parent-teacher meeting	Online Examination	Accounts			

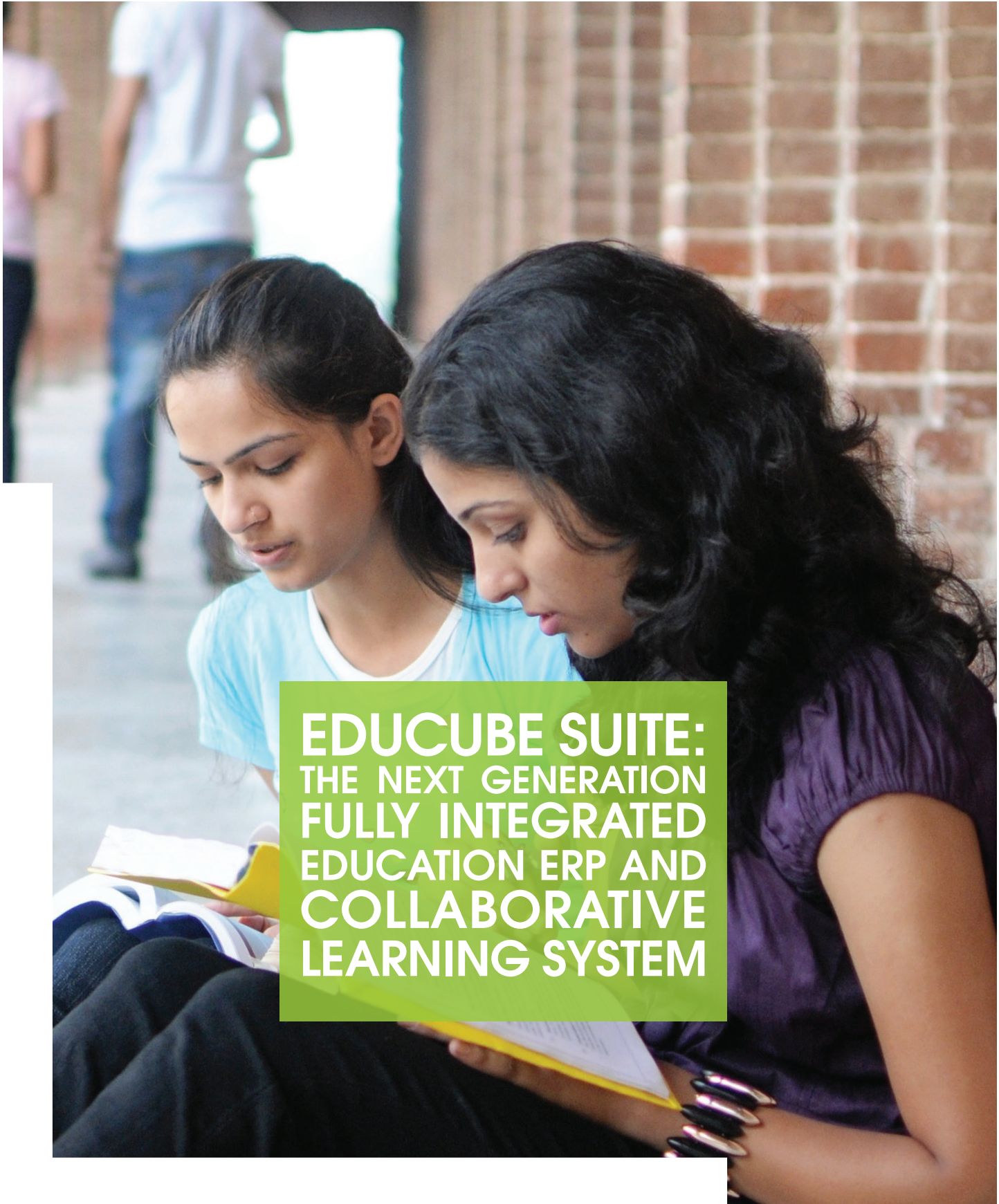


## Supporting Educube across the Commonwealth

1886 Investments supports Globals ITeS, and thus Educube, through direct investment and sales and marketing support, helping the company to grow, develop its product and services portfolio and raise awareness across the global education market place.

1886 Investments offers cost-effective, educational consultancy, products and services and is a wholly owned subsidiary of the Commonwealth Education Trust. 1886 Investments was established to deliver sustainable curriculum, management and infrastructure products and services within the education sector across the 54 countries of the Commonwealth.

For more information on the Educube Suite of Services visit: [www.educube.net](http://www.educube.net)  
 mail: [info@educube.net](mailto:info@educube.net) or call: +91-80-43303666





**Educube Suite is suitable for pre-school through to University, and can be purchased in several ways:**

### Educube Learn:

The stand alone specialised Collaborative Learning and Curriculum Management System (including school management modules)

### Educube Suite:

The combined and fully integrated system, delivering both Collaborative Learning and a comprehensive ERP

### Educube ERP:

The comprehensive ERP



## What is Educube?

Educube is an integrated ERP and content management system that helps schools and associated districts and regions not only manage the everyday activities necessary for a school, or number of schools, to operate successfully but also give access to the tools and materials required by teachers to deliver the curriculum and monitor students performance. Even parents are able to access the system, allowing them to review how their child is performing, their attendance records and the like.

All users have a unique login, with permissions set accordingly, allowing them access to functionality relevant to their needs and, with data safely and securely stored in the cloud, this can be from anywhere, anytime, day or night.

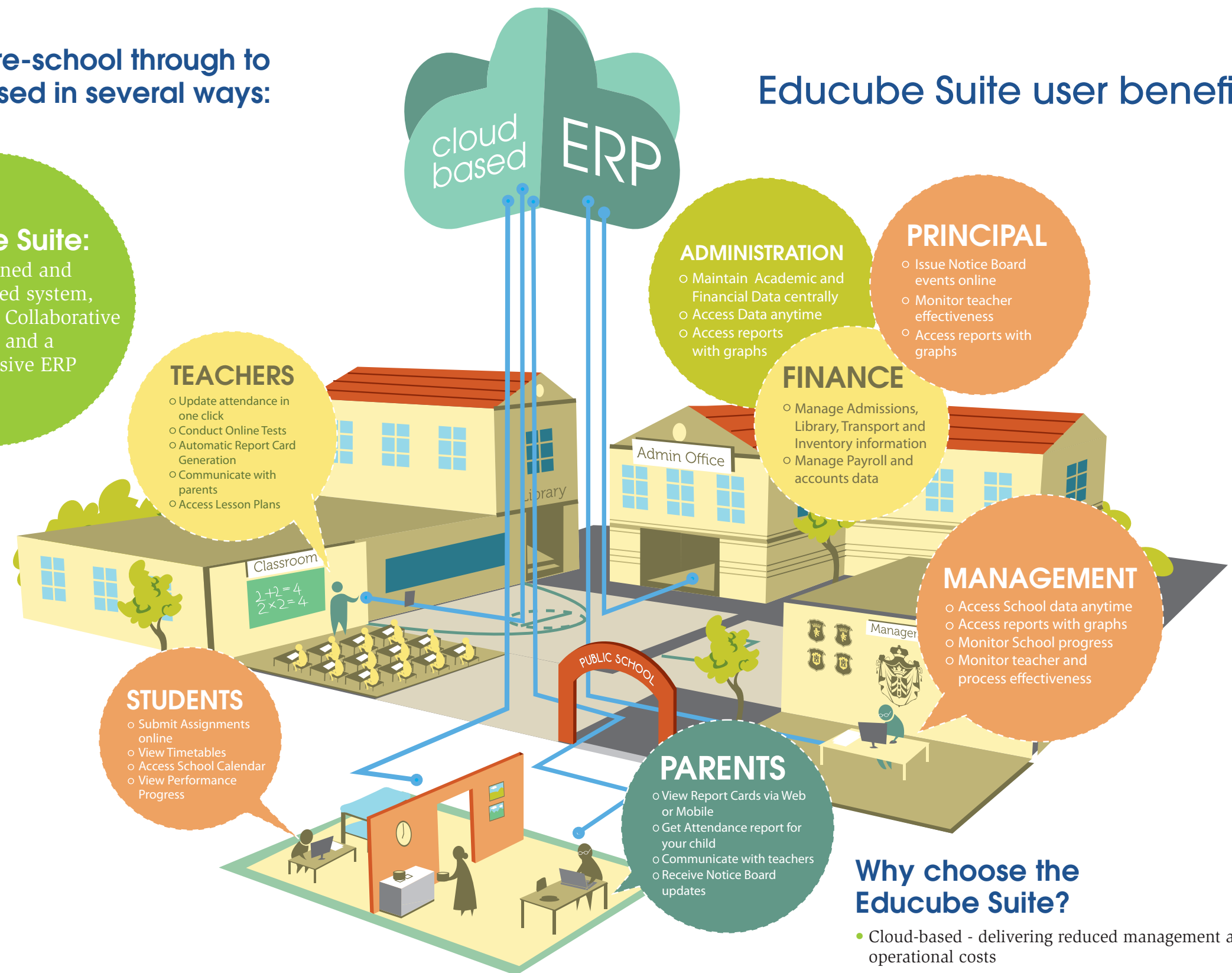
## What is ERP?

ERP stands for Enterprise Resource Planning. This means that any or all of the modules offered within Educube will automatically exchange and update data, not only between the modules but also the existing education system. This ensures that all stakeholders, regardless of their role, can have confidence that they are working with accurate, real-time data.

## What is cloud computing?

Cloud computing has become ubiquitous across the world, allowing for the remote storage of data, thus reducing the need for equipment and IT specialists in any institution. This results in significantly less running costs, both from a support, as well as hardware point of view.

## Educube Suite user benefits:



## Why choose the Educube Suite?

- Cloud-based - delivering reduced management and operational costs
- No upfront costs, sold through license and available on SaaS Model as well as On-Premise Model
- Allows real-time, peer-to-peer engagement
- All modules fully integrated to work seamlessly with each other
- Regional or school cluster real-time reporting
- Current curricula supported (others scheduled): CBSE, ICSE, IGCSE, Ontario, IB, Indian State Board curricula
- For use on multiple devices, mobile and tablet compatible